

COMMUNITY
WILDLIFE HABITAT

KEEP IT WILD



Birds, insects, and other animals need corridors of connected habitat to thrive.

Community Wildlife Habitat is an initiative of the Lancaster Conservancy in partnership with the National Wildlife Federation. The initiative's goal is to work with local property owners, schools, and communities to encourage the planting of native plants and trees as well as gardens that reduce stormwater runoff while providing habitat that will benefit wildlife and attract pollinators.

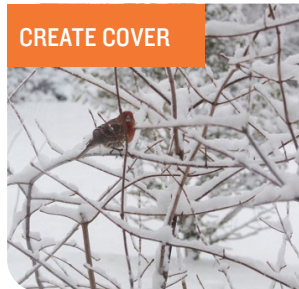
Lancaster Conservancy protects and restores large tracts of natural lands, but we need our community to help create wildlife habitat in other places, especially in developed areas. Lancaster Conservancy offers a variety of resources and activities to help you learn about conservation landscaping solutions to help solve our water, climate, and habitat crises.

Whether you're a homeowner hoping to pick up skills to transform your own property, a seasoned landscaper or groundskeeper looking to advance your professional knowledge, or a passionate community member who wants to learn how you can help transform your neighborhood, school, or place of worship into a thriving space for wildlife — the Conservancy has resources to help!



Discover resources to help you get started with native gardening, register for Habitat Advocate classes, or schedule a site visit with a trained Community Wildlife Habitat Volunteer at [lancasterconservancy.org/habitat](https://www.lancasterconservancy.org/habitat).

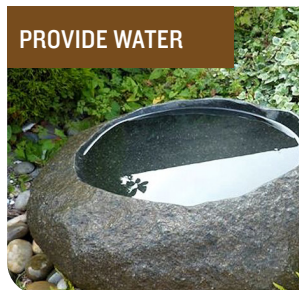
CREATE COVER



PROVIDE FOOD



PROVIDE WATER



117 South West End Avenue
Lancaster, PA 17603
717-392-7891
www.lancasterconservancy.org



COMMUNITY
WILDLIFE HABITAT

NATURE'S LEAST WANTED

Protect Native Habitats by Avoiding These Popular Ornamentals

Many invasive plants were introduced as non-native ornamentals sold by nurseries for their beauty and hardiness. Even though these plants have escaped cultivation and are threatening native habitats, they are still available at garden centers in high demand. When non-native plants invade wild places, they dramatically reduce the available habitat for birds, insects, mammals, and amphibians which are specifically adapted to native plants for food and shelter. As an alternative, native plants offer similar desirable characteristics, while supporting a healthy environment for us and for wildlife.

The following list includes the top invasive plants that should NOT be planted on your property due to their threat to local ecosystems.

COMMON PERIWINKLE
(VINCA MINOR)



ENGLISH IVY
(HEDERA HELIX)



COMMON DAYLILY
(HEMENCALLIS FULVA)



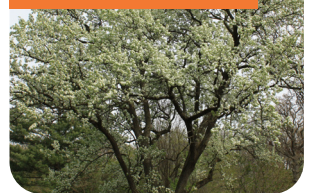
JAPANESE BARBERRY
(BERBERIS THUNBERGII)



JAPANESE SPIRAEA
(SPIRAEA JAPONICA)



BRADFORD PEAR
(PYRUS CALLERYANA)



BURNING BUSH
(EUONYMUS ALATUS)



HEAVENLY BAMBOO
(NANDINA DOMESTICA)



BUTTERFLY BUSH
(BUDDLEJA SPP.)



**For information about native alternatives to popular garden plants,
please contact Linda Ferich at lferich@lanasterconservancy.org.**